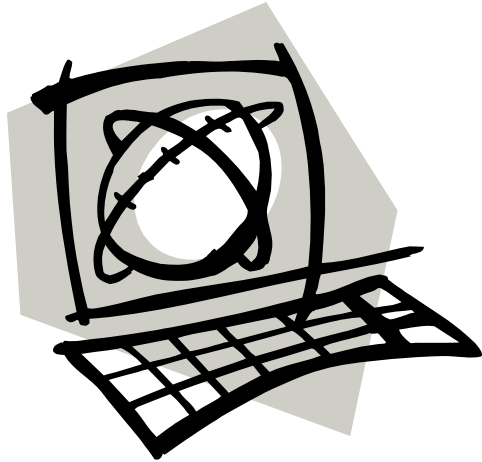


Topic Paper

The topics approached in this course are presented as essential questions that we must ask ourselves as professionals who encourage use and provide access to electronic resources for children and young adults. Since there are no right or wrong answers to these questions, you will have to ponder readings, weigh class discussions, explore resources, and articulate your personal viewpoints about each topic.



Your final assignment is to explore a topic of interest, to which you will add your own value. To do this, you will craft and write about your own essential question. Choose a topic that relates to our course. There may be a topic that we did not address to your satisfaction during our short time together, or one that you wish to explore in more detail. It may be one that we did not cover in class, but has to do with the theme of the course. For example: Internet safety, cultivating culturally responsive digital resources and services, accessibility, the role of the library in distance learning in the K-12 environment, or public and school library collaboration in the digital environment. Whatever topic you choose must be crafted into an essential question and approved by your instructor before you may begin your researching and writing.

1. Choose a topic of interest.
2. Craft it into an essential question. Use the essential question worksheet to help with this task. Make sure that you understand the criteria of an essential question before you begin.
3. Get your essential question approved by your instructor by June 19, 2007 by submitting your worksheet at the beginning of class.
4. When your essential question is approved, begin researching and writing about your topic. Your final paper should be a thoughtful response to your essential question—more than a traditional research paper. You need to include in-text citations (parenthetical) and a Works Cited page of scholarly (and popular, if appropriate) resources. Your citations and Works Cited should be in MLA style. This paper should be between 5-6 pages in length, not including the Works Cited page(s) or title page. Use in-text citation, Times New Roman, 12 point, double-spaced. Include a title page. The title of your paper is your pre-approved essential question.
5. Turn in the approved Essential Question Worksheet with final paper.
6. Paper is due bjansen@sasaustin.org by 10:00 a.m. on July 9. If it is not received by that time, you will not receive a grade and the best you can make in the class is a C-.
7. You will want to use the accompanying scoring guide to assess your efforts before you submit your paper.